

## TABLE OF CONTENTS

- [Warming Up for Christmas](#)
- [Weald Crafts Christmas Fair](#)
- [Fresh Ideas](#)
- [Sky Disc of Nebra](#)
- [Expressions in Detail](#)
- [Inspiration is all it takes](#)
- [Nitty Gritty](#)

## DIARY DATES

### Still to Come...

#### Sedlescombe Craft Fair

Sunday 19th October

Sedlescombe Village Hall,  
Church Hill, Sedlescombe  
TN33 0QP

#### Ardingly College Show

25th/26th |October

Ardingly College,  
Haywards Heath RH17 6SQ

#### Cooden Beach Christmas Fair

Fri 21st/Sat 22nd

November

Cooden Beach Hotel

Cooden Sea Road

Bexhill-on-Sea TN39 4TT

## Warming Up for Christmas

For the second year, Weald Crafts is holding a pre-Christmas event at Ardingly College, West Sussex on Saturday and Sunday October 25th and 26th.

The event is bigger and better than last year with 40 stall, including some new and very different products on offer.

Customers will be very welcome from 10:00am — 4:00pm and the College will be offering tea/coffee all day, and light lunches, and there is ample free parking.



Sarah Hill

## Weald Crafts Christmas Fair



### COODEN BEACH HOTEL

(click for website)

### 21st AND 22nd NOVEMBER

This event at the end of the November will always be the Weald Crafts Christmas Fair. This year it is the last event of our 2014 programme.

**There are a small number of places still available at time of publishing.**

This event became available to our members about September this year so it is no surprise that there are a number of places still to be taken up.

If you would like to take up one of the places still open then please ring the following numbers or email [ALAN BRISTOW](#) (click) Home

01424 422968 Mobile 07967374591

Thank you and remember the third weekend in November each year will be our CHRISTMAS FAIR weekend.

## WEALD CRAFTS AGM

Tuesday 3rd February

7:30pm

Robertsbridge Village Hall

Refreshments after the meeting

## Weald Wool Fair

1st November,

Wadhurst Village

TN5 6G

More Info ([click](#))

(Not a Weald Crafts event)



## What's Your News?

Do you have something to tell other members?

If you would like to be part of the next Weald Crafts Newsletter please email your story to [Margaret Turton](#) ([click](#))

Please add this email address to your Contacts List to ensure you receive all future Newsletters.

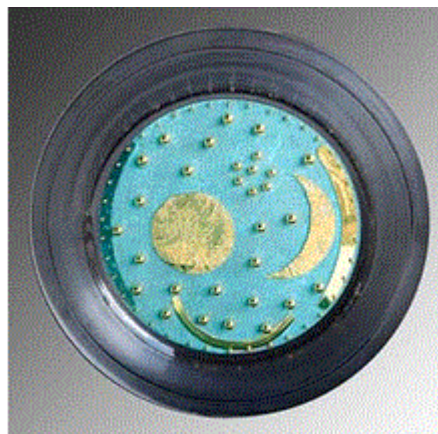
## Fresh Ideas

I have recently completed a City & Guilds Course in Decorative Textiles Stage 1, and have started to put into practice some of the techniques learned. I will now be expanding my range from Handbags and Cushions, into other textile projects, including Pictures, some of which will be ready for the Christmas market.

Patricia Buchanan



## Sky Disc of Nebra



In 1999 a fantastic discovery was made in Germany that astounded archeologists. On the top of a mountain, at one of a thousand burial sites in the area, an astronomical clock was found that has since been proved to be 3600 years old. Made of bronze and gold, it is the world's oldest depiction of the cosmic phenomena.

Anthony Elson, a silversmith of some renown, recently asked one of our members, Peter Castle, to collaborate in the production of a replica disc with a surround which represents the rings of Saturn. The disc, 18" in diameter, has been made in solid silver

with gold embellishments and the surround is in acrylic, ringed on the front and polished to the rear. Now complete, the disc will in due course be on permanent display at an exhibition.

Peter Castle

## Expressions in Detail



### Paintings of Land and Sea

[Margaret Turton](#) and [Paul Liddiard](#)  
([click for websites](#))

**Continues until Sunday 26th October 2014**

[Little Chelsea Gallery](#), Eastbourne

Weald Crafts artist, Margaret Turton, presents her collection of watercolour and acrylic paintings at this lovely little

gallery in Eastbourne. Both artists concentrate on detailed paintings of landscapes and coastal scenes as they see it. No fancy rhetoric, just great drawing and accomplished brush strokes

Maragret Turton



**Spread the News**

**Forward to a friend (click)**

**Weald Crafts  
Supporters on  
Facebook**

**Tell us what you are up to,  
your thoughts and  
questions by joining our  
Facebook Group (click). A  
social page for members  
and followers of Weald  
Crafts**

**Sponsored Charity**

We are pleased to have Macmillan Cancer Support at our events in 2014.

**New Members**

We welcome the following new members for 2014/15:

**Norbert Guyon** of Eastbourne. Craft—Artwork for children.

**Christine Gett** of Pound Hill, Crawley. Craft—Soft furnishings, traditional upholstery.

**Derek Maurice** of Cripps Corner, Staplecross. Craft—T Shirts/Aprons, Jams and Chutneys

## Inspiration is all it takes

How many of us have walked around our craft shows at slack moments, not looking to purchase, but to gain some form of inspiration? Every year I look for something to inspire me. I don't know what it is or where I will find it but inspiration is out there! This year I have been especially lucky and have found two pieces of inspiration and both have come from unlikely sources. Both will, I believe, prove a benefit to me.



The first was a school craft fair where I discovered dog chews. The suppliers name was Stagglers and the dog chew is a hard, natural product which is sourced in this country and is in plentiful supply each year. What is it? It's red deer antler. Naturally shed every year, not farmed nor culled and they make great pens!

My second discovery was more recent, Polymer Clay. I was at a craft show in Wadhurst and my stand was next to a polymer clay artist names Birdy Heywood. Whilst at the show I watch Birdy make a dragon and I was amazed at how solid this little creature was, once she had finished it. Birdy explained how to make polymer clay canes using different colours blended and fixed together. She showed me how to cover my pen tubes with the clay and all you have to do is pop it in the oven for 30 minutes at 130 degrees and 'hey presto' once cooled, a rock solid substance that turns on a lathe like a dream. Now where do I find some more inspiration?

Graham Pollard

## Nitty Gritty

### Cancellations

We appear to have a phenomenon which has come to the fore during the course of the current Programme. Organisers are reporting that a disturbing number of members are cancelling their bookings shortly before events. Of course, there will be occasions when there is no choice but to cancel, however the number of occasions that this has happened recently is now beginning to create a problem.

Please bear in mind that your organisers commit a sizeable group funding to the events, often in excess of £2000. To receive cancellations at a late stage can be somewhat worrying even if there is a 'reserve list' as the income is finely balanced against the expenditure. The alternative would be to increase pitch costings so as to ensure there will not be a loss. To date we have managed without cancelling any events but if the trend continues the outcome is inevitable.

**cont.**

## Nitty Gritty continued...

### Chairman Vacancy

At our recent committee meeting I gave notice that it will not be my intention to stand again for the position of Chairman at the forthcoming AGM. Having been involved with Weald Crafts since its inception, I now wish to concentrate on pastures new, It has been a very interesting decade and I hope to retain some involvement in the future.

Might I suggest that you give thought to a replacement and contact a committee member with your ideas. At least that way, hopefully, we can maintain continuity and not create a problem for you hard-working committee at a time when they will be concentrating on the forthcoming Programme.

### **NEXT AGM—TUESDAY 3rd FEBRUARY 2015**

Robertsbridge Village Hall, 7:30pm

Be there to get your views heard!

Peter Castle, Chairman